



Strata & Community Titles

Experience | Service | Quality



MNG is a **leading provider** of survey and spatial solutions for the **built form industry**. Our specialist **strata titling team** partners with our clients across the entire lifecycle of their projects, supported by leading edge technology and the expertise of our **licensed surveyors** and project management team.

With over **30 years of experience**, we enjoy industry level engagement regarding the **future direction** of **strata and community titles** with Landgate, WAPC, UDIA and the Property Council. As our client, you can benefit directly from our **in-depth industry knowledge**, unwavering investment in people and technology and ability to help you realise the potential of your development as quickly as possible.

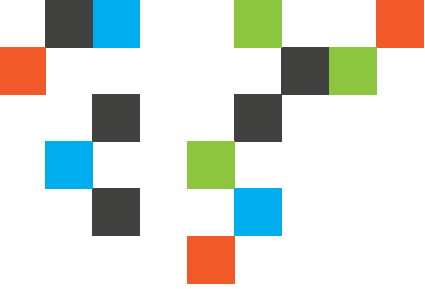


Credit: Claremont by Mirvac. Photography – Dion Robeson

DEDICATED TO TITLES

Our clients consistently tell us that our unique project team structure and online communication tools set us apart from the rest of the industry. Our emphasis is on **obtaining** your strata and community titles as **quickly and efficiently** as possible. Dedicated project assistants guide the process from start to finish. Backed up by **bespoke digital tracking systems**, our experts regularly save weeks in project timelines leading to significant cost savings for you.

Your project team provides you with a **fully integrated service** that includes, preparing draft strata plans, draft unit entitlements and **scheme by-laws**, so that you can get to market and **secure pre-sales**. In addition, we work closely with the wider consultant team including architects, town planners, conveyancers and legal advisors.



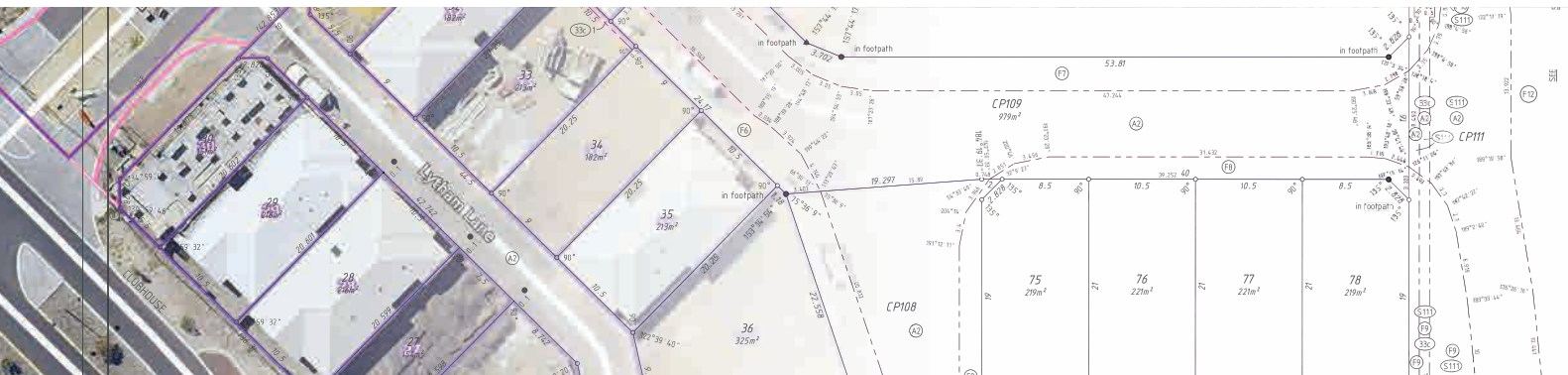
Built Form Development Services

Our clients have access to services including:

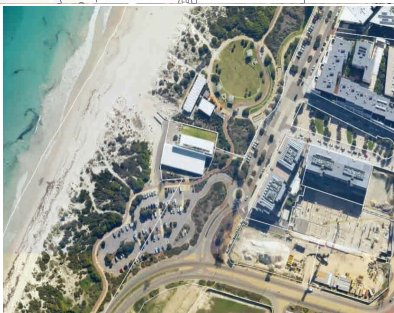
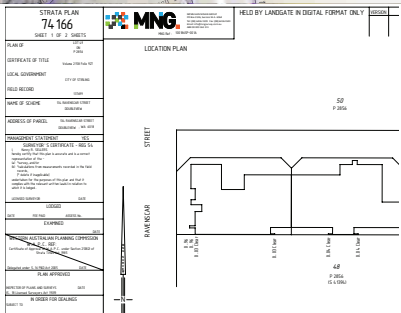
- **Pre-construction**
 - Detail & topographic surveys for design purposes
 - 3D visualisation to aid in approvals and consultation
 - Preparation of draft strata plans for sales contracts
- **Construction Phase**
 - Engineering and set-out surveys for construction
 - Consultation on land tenure issues and easements
- **Post Construction**
 - Liaison with authorities for clearances and occupancy permits
 - Finalisation of Strata Plans for issue of Titles
 - Building as-constructed survey and BIM modelling

MNG Access – Access The Possibilities

MNG Access gives you 24/7 access to all survey plans, approvals clearance information and updates. Designed specifically for urban **developers** and affiliated consultants, you will be able to track the **progress** of your development via our app or online. You can see at your fingertips **mobile mapping** of the project combined with existing site conditions including **latest aerial imagery**, topography, utilities, environmental and planning layers. MNG Access gives you accurate, **real-time** data of potential development opportunities and relevant attributes in a clear, easy-to-use package.



Henley by Fini Development



Leighton by Mirvac



Wright Street by Fini Development

REALISE YOUR FULL
INVESTMENT POTENTIAL

READY TO SEE WHAT VALUE MNG'S STRATA AND COMMUNITY TITLES TEAM CAN ADD TO YOUR NEXT PROJECT? WE'D LOVE TO SIT DOWN WITH YOU AND TALK THROUGH THE POSSIBILITIES.



MNG Perth
Level 1, 2 Sabre Crescent,
Jandakot WA 6164
(08) 6436 1599

MNG Melbourne
31/574 Plummer Street,
Port Melbourne VIC 3207
(03) 7002 2200

E info@mngsurvey.com.au
W mngsurvey.com.au
MNG Ref: 94643mar-085e.indd